

# Nozzles

## - Table for the suitable nozzle

Flow rate in l/min-USGpm at the indicated pressure bar-psi

Pressure	NOZZLE																			Flow rate	
	02	03	035	04	045	05	055	06	065	07	075	08	085	09	10	11	12	13	14		15
50 bar	3,2	4,8	5,5	6,6	7,1	8	8,7	9,6	10,4	11,2	12	12,7	13,5	14,3	16	17,3	18,9	20,5	22,1	23,9	l/min
725 psi	0.9	1.3	1.5	1.8	1.9	2.1	2.3	2.6	2.8	3.0	3.2	3.4	3.6	3.8	4.3	4.6	5.0	5.5	5.9	6.4	USGpm
60 bar	3,5	5,3	6	7,3	7,8	8,7	9,6	10,4	11,3	12,2	13,1	14	14,8	15,7	17,4	19	20,8	22,5	24,2	26,1	l/min
870 psi	0.9	1.4	1.6	1.9	2.1	2.3	2.6	2.8	3.0	3.3	3.5	3.7	3.9	4.2	4.6	5.1	5.5	6.0	6.5	7.0	USGpm
70 bar	3,7	5,7	6,5	7,8	8,4	9,4	10,3	11,3	12,3	13,2	14,2	15,1	16	17	18,9	20,5	22,4	24,3	26,1	28,3	l/min
1015 psi	1	1.5	1.7	2.1	2.2	2.5	2.7	3.0	3.3	3.5	3.8	4.0	4.3	4.5	5.0	5.5	6.0	6.5	7.0	7.5	USGpm
80 bar	4	6,1	7	8,4	9	10	11,1	12,1	13,2	14,1	15,2	16,1	17,1	18	20,1	22	24	26	28	30,2	l/min
1160 psi	1.1	1.6	1.9	2.2	2.4	2.7	3.0	3.2	3.5	3.8	4.1	4.3	4.6	4.8	5.4	5.9	6.4	6.9	7.5	8.1	USGpm
90 bar	4,2	6,3	7,4	8,9	9,6	10,7	11,8	12,8	14	15	16,1	17,1	18,1	19,2	21,4	23,3	25,4	27,5	29,6	32,1	l/min
1305 psi	1.1	1.7	2.0	2.4	2.6	2.9	3.1	3.4	3.7	4.0	4.3	4.6	4.8	5.1	5.7	6.2	6.8	7.3	7.9	8.6	USGpm
100 bar	4,5	6,8	7,8	9,4	10,2	11,3	12,4	13,6	14,7	15,8	16,9	18	19,1	20,2	22,5	24,5	26,8	29	31,3	33,8	l/min
1450 psi	1.2	1.8	2.1	2.5	2.7	3.1	3.3	3.6	3.9	4.2	4.5	4.8	5.1	5.4	6.0	6.5	7.1	7.7	8.3	9.0	USGpm
110 bar	4,7	7,1	8,2	9,8	10,5	11,8	13	14,3	15,4	16,6	17,7	18,9	20	21,2	23,6	25,7	28,1	30,4	32,8	35,3	l/min
1395 psi	1.3	1.9	2.2	2.6	2.8	3.1	3.5	3.8	4.1	4.4	4.7	5.0	5,3	5.7	6.3	6.9	7.5	8.1	8.7	9.4	USGpm
120 bar	4,8	7,4	8,6	10,3	10,9	12,4	13,6	14,9	16,1	17,3	18,5	19,7	20,9	22,1	24,6	26,9	29,4	31,8	34,2	36,9	l/min
1740 psi	1.3	2.0	2.3	2.7	2.9	3.3	3.6	4.0	4.3	4.6	4.9	5.3	5.6	5.9	6.6	7.2	7.8	8.5	9.1	9.8	USGpm
130 bar	5	7,7	8,9	10,7	11,4	12,9	14,1	15,5	16,8	18	19,3	20,5	21,8	23	25,6	28	30,6	33,1	35,6	38,4	l/min
1885 psi	1.3	2.1	2.4	2.9	3.0	3.4	3.8	4.1	4.5	4.8	5.1	5.5	5.8	6.1	6.8	7.5	8.2	8.8	9.5	10.2	USGpm
140 bar	5,3	8	9,2	11,1	11,8	13,4	14,7	16	17,4	18,7	20	21,3	22,6	23,9	26,6	29,1	31,7	34,4	37	39,9	l/min
2030 psi	1.4	2.1	2.5	3.0	3.1	3.6	3.9	4,3	4.6	5.0	5.3	5.7	6.0	6.4	7.1	7.8	8.5	9.2	9.9	10.6	USGpm
150 bar	5,4	8,3	9,5	11,5	12,2	13,8	15,2	16,7	18	19,3	20,7	22	23,4	24,7	27,6	30,1	32,8	35,6	38,3	41,3	l/min
2175 psi	1.4	2.2	2.5	3.1	3.3	3.7	4.1	4.5	4.8	5.1	5.5	5.9	6.2	6.6	7.4	8.0	8.7	9.5	10.2	11.0	USGpm
170 bar	6,0	8,9	10,2	11,9	13,4	14,9	16,3	17,9	19,3	20,9	22,3	23,7	25,3	24,4	30	32,6	35,2	39,1	41,7	44,3	l/min
2465 psi	1.6	2.3	2.7	3.1	3.5	3.9	4.3	4.7	5.1	5.5	5,9	6.3	6.7	7.2	7.9	8.6	9.3	10.3	11.0	11.7	USGpm
180 bar	6,2	9,1	10,5	12,2	13,8	15,3	16,8	18,4	19,9	21,5	22,9	24,4	26	28,2	30,9	33,5	36,2	40,2	42,9	45,6	l/min
2610 psi	1.6	2.4	2.8	3.2	3.7	4.0	4.4	4.9	5.2	5.7	6.1	6.5	6.9	7.4	8.2	8.9	9.6	10.6	11.3	12.1	USGpm
200 bar	6,3	9,6	11	13,3	14,1	16	17,5	19,2	20,8	22,3	23,9	25,2	27	28,6	31,8	34,7	37,9	41,1	44,3	47,7	l/min
2900 psi	1.7	2.6	2.9	3.5	3.8	4.3	4.7	5.1	5.5	5.9	6.4	6.7	7.2	7.6	8.5	9.3	10.1	11.0	11.8	12.7	USGpm
225 bar	6,7	10,2	11,7	14,1	15	16,9	18,6	20,4	22	23,7	25,3	27	28,6	30,3	33,7	36,8	40,2	43,6	46,9	50,6	l/min
3263 psi	1.8	2.7	3.1	3.8	4.0	4.5	5.0	5.4	5.9	6.3	6.7	7,2	7.6	8.1	9.0	9.8	10.7	11.6	12.5	13.5	USGpm
250 bar	7	10,7	12,3	14,8	15,8	17,9	19,6	21,5	23,2	25	26,7	28,5	30,2	31,9	35,6	38,8	42,4	45,9	49,4	53,3	l/min
3625 psi	1.9	2.9	3.3	3.9	4.2	4.8	5.2	5.7	6.2	6.7	7.1	7.6	8.1	8.5	9.5	10.3	11.3	12.2	13.2	14.2	USGpm
275 bar	7,6	11,2	12,8	15	16,9	18,7	20,5	22,5	24,3	26,3	28,1	29,9	31,9	34,5	37,8	41,1	44,9	49,3	52,6	55,9	l/min
3988 psi	2.0	3.0	3.4	4.0	4.5	4.9	5.4	5.9	6.4	6.9	7.4	7.9	8.4	9.1	10.0	10.9	11.7	13.0	13.9	14.8	USGpm
300 bar	7,9	11,9	13,5	15,8	17,9	19,8	21,7	23,7	25,7	27,8	29,6	31,5	33,5	36,4	39,7	43,2	46,8	51,9	55,4	58,8	l/min
4350 psi	2.1	3.2	3.6	4.2	4.8	5.3	5.8	6.3	6.9	7.4	7.9	8.4	8.9	9.7	10.6	11.5	12.5	13.8	14.8	15.7	USGpm
350 bar	8,5	12,8	14,6	17	19,3	21,3	23,5	25,7	27,8	29,9	32	34,1	36,1	39,3	43,1	46,7	50,4	56,2	60	63,5	l/min
5075 psi	2.3	3.4	3.9	4.5	5.1	5.7	6.3	6.9	7.4	8.0	8.5	9.1	9.6	10.5	11.5	12.5	13.4	15.0	16,0	16.9	USGpm
400 bar	9	13,6	15,6	18,2	20,7	22,9	25,1	27,5	29,7	32,1	34,2	36,3	38,7	41,8	46,2	50,1	54,1	60,2	63,9	68,1	l/min
5800 psi	2.4	3.6	4.2	4.9	5.5	6.1	6.7	7.3	7.9	8.6	9.1	9.7	10.3	11.1	12.3	13.4	14.4	16.1	17,0	18.2	USGpm
450 bar	9,6	14,5	16,5	19,3	21,8	24,2	26,6	29,2	31,5	34,1	36,3	38,5	41,1	44,4	49	53,1	57,3	63,6	67,9	72,1	l/min
6525 psi	2,6	3.9	4.4	5.1	5.8	6.5	7.1	7.8	8.4	9.1	9.7	10.3	11.0	11.8	13.1	14.2	15.3	17.0	18.1	19.2	USGpm
500 bar	10,2	15,2	17,3	20,2	22,9	25,6	28,2	30,7	33,2	36	38,2	40,8	43,5	47,1	51,5	55,9	60,4	67,1	71,6	76,1	l/min
7250 psi	2,7	4.1	4.6	5.4	6.1	6.8	7.5	8.2	8.9	9.6	10.2	10.9	11.6	12.6	13.7	14.9	16.1	17.9	19.1	20.3	USGpm

## Nozzles

### - H.p. nozzles, NPT-M

#### H.p. nozzles 1/8" NPT-M



*Products of the highest quality, chosen and distributed by Club dei Riparatori to ensure the best value for money available today.*

gr. 20  
oz. 0.7

Code	Angle	Flow rate
C.18MEG0003	0°	03
C.18MEG00035	0°	035
C.18MEG0004	0°	04
C.18MEG00045	0°	045
C.18MEG0005	0°	05
C.18MEG00055	0°	055
C.18MEG0006	0°	06
C.18MEG0007	0°	07
C.18MEG0008	0°	08
C.18MEG1503	15°	03
C.18MEG15035	15°	035
C.18MEG1504	15°	04
C.18MEG15045	15°	045
C.18MEG1505	15°	05
C.18MEG15055	15°	055
C.18MEG1506	15°	06
C.18MEG1507	15°	07
C.18MEG1508	15°	08
C.18MEG2503	25°	03
C.18MEG25035	25°	035
C.18MEG2504	25°	04
C.18MEG25045	25°	045
C.18MEG2505	25°	05
C.18MEG25055	25°	055
C.18MEG2506	25°	06
C.18MEG2507	25°	07
C.18MEG2508	25°	08
C.18MEG4003	40°	03
C.18MEG40035	40°	035
C.18MEG4004	40°	04
C.18MEG40045	40°	045
C.18MEG4005	40°	05
C.18MEG40055	40°	055

#### H.p. nozzles 1/4" NPT-M



*Products of the highest quality, chosen and distributed by Club dei Riparatori to ensure the best value for money available today.*

gr. 20  
oz. 0.7

Code	Angle	Flow rate
C.MEG0003	0°	03
C.MEG00035	0°	035
C.MEG0004	0°	04
C.MEG00045	0°	045
C.MEG0005	0°	05
C.MEG00055	0°	055
C.MEG0006	0°	06
C.MEG0007	0°	07
C.MEG0008	0°	08
C.MEG1503	15°	03
C.MEG15035	15°	035
C.MEG1504	15°	04
C.MEG15045	15°	045
C.MEG1505	15°	05
C.MEG15055	15°	055
C.MEG1506	15°	06
C.MEG1507	15°	07
C.MEG1508	15°	08
C.MEG2503	25°	03
C.MEG25035	25°	035
C.MEG2504	25°	04
C.MEG25045	25°	045
C.MEG2505	25°	05
C.MEG25055	25°	055
C.MEG2506	25°	06
C.MEG2507	25°	07
C.MEG2508	25°	08
C.MEG4003	40°	03
C.MEG40035	40°	035
C.MEG4004	40°	04
C.MEG40045	40°	045
C.MEG4005	40°	05
C.MEG40055	40°	055

## Nozzles

- H.p. nozzles, tip fitting Kärcher

### H.p. nozzles , tip



*Products of the highest quality, chosen and distributed by Club dei Riparatori to ensure the best value for money available today.*

gr. 20  
oz. 0.7

Code	Angle	Flow rate
DT.FUH11503	15°	03
DT.FUH115035	15°	035
DT.FUH11504	15°	04
DT.FUH115045	15°	045
DT.FUH11505	15°	05
DT.FUH115055	15°	055
DT.FUH11506	15°	06
DT.FUH115065	15°	065
DT.FUH11507	15°	07
DT.FUH115075	15°	075
DT.FUH11508	15°	08
DT.FUH12503	25°	03
DT.FUH125035	25°	035
DT.FUH12504	25°	04
DT.FUH125045	25°	045
DT.FUH12505	25°	05
DT.FUH125055	25°	055
DT.FUH12506	25°	06
DT.FUH125065	25°	065
DT.FUH12507	25°	07
DT.FUH125075	25°	075
DT.FUH12508	25°	08
DT.FUH140045	40°	045
DT.FUH14005	40°	05
DT.FUH140055	40°	055

### CDR.7023

**Tip retainer,**  
M 18x1 F



gr. 30  
oz. 1.1

### CDR.7024

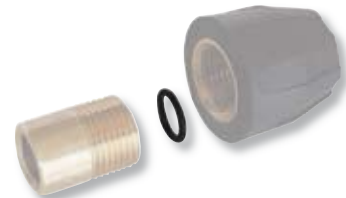
**Brass nozzle holder,**  
G 1/4" F-M 18x1 M



gr. 30  
oz. 1.1

### ZX.0154

**Set O-Ring** for brass nozzle holder  
(code CDR.7024)



gr. 20  
oz. 0.7

quantity  
1x100



## Nozzles

- Nozzle holder

*The spare parts branded "CdR" exclusively refer to products by Club dei Riparatori® by IDROBASE®*

### ZX.7113

**CdR 7 nozzle holder with black protection.**  
Made of zinc steel, inlet G 1/4" F, outlet 1/4" NPT-F.



gr. 45  
oz. 1.6

### ZX.7140

**CdR 7 nozzle holder with blue protection.**  
Made of stainless steel, inlet G 1/4" F, outlet 1/4" NPT-F.



gr. 45  
oz. 1.6

### CDR.0359

**Black rubber nozzle protection**



gr. 20  
oz. 0.7

### CDR.7420

**Nozzle holder coupling,**  
inlet G 1/4" F, outlet 1/4" NPT-F.



gr. 40  
oz. 1.4

### CDR.0364

**Nozzle holder coupling,**  
inlet G 1/8" F, outlet 1/4" NPT-F.



gr. 40  
oz. 1.4

## Nozzles

### - H.p. nozzles, "Quick"



Code	Angle	Flow rate
ES.NOQS-0003	0°	03
ES.NOQS-0003.5	0°	035
ES.NOQS-0004	0°	04
ES.NOQS-0004.5	0°	045
ES.NOQS-0005	0°	05
ES.NOQS-0005.5	0°	055
ES.NOQS-0006	0°	06
ES.NOQS-0007	0°	07
gr. 18 oz. 0.7	<i>H.p. quick nozzle 0° RED</i>	



Code	Angle	Flow rate
ES.NOQS-1503	15°	03
ES.NOQS-1503.5	15°	035
ES.NOQS-1504	15°	04
ES.NOQS-1504.5	15°	045
ES.NOQS-1505	15°	05
ES.NOQS-1505.5	15°	055
ES.NOQS-1506	15°	06
ES.NOQS-1507	15°	07
gr. 18 oz. 0.7	<i>H.p. quick nozzle 15° YELLOW</i>	



Code	Angle	Flow rate
ES.NOQS-2503	25°	03
ES.NOQS-2503.5	25°	035
ES.NOQS-2504	25°	04
ES.NOQS-2504.5	25°	045
ES.NOQS-2505	25°	05
ES.NOQS-2505.5	25°	055
ES.NOQS-2506	25°	06
ES.NOQS-2507	25°	07
gr. 18 oz. 0.7	<i>H.p. quick nozzle 25° GREEN</i>	



Code	Angle	Flow rate
ES.NOQS-4003	40°	03
ES.NOQS-4003.5	40°	035
ES.NOQS-4004	40°	04
ES.NOQS-4004.5	40°	045
ES.NOQS-4005	40°	05
ES.NOQS-4005.5	40°	055
ES.NOQS-4006	40°	06
ES.NOQS-4007	40°	07
gr. 18 oz. 0.7	<i>H.p. quick nozzle 40° WHITE</i>	



Code	Angle	Flow rate
ES.NOQB-6540	65°	40
gr. 18 oz. 0.7	<i>L.p. quick nozzle 65° BLACK</i>	



Code	Flow rate
ZX.0354	03
ZX.0310	035
ZX.0621	04
ZX.0293	045
ZX.0292	05
ZX.0343	055
ZX.0303	06
ZX.0304	07
gr. 195 oz. 6.9	<i>H.p. quick nozzles set</i>

#### CDR.7026

**H.p. ball quick coupling, female**, with rubber protection, inlet G 1/4" F, outlet "Quick", 250 bar-3600 psi, 30 l/min-8.00 USGpm, 90 °C-195 °F



gr. 70  
oz. 2.5

#### CDR.7054

**H.p. ball quick coupling, male**, inlet "Quick", outlet G 1/4" F, 250 bar-3600 psi, 30 l/min-8.00 USGpm, 90 °C-195 °F



gr. 32  
oz. 1.2

#### CDR.7055

**H.p. ball quick coupling, male**, inlet "Quick", outlet G 1/4" M, 250 bar-3600 psi, 30 l/min-8.00 USGpm, 90 °C-195 °F



gr. 31  
oz. 1.2

## Nozzles

### - Rotating brush



gr. 890  
oz. 31.2

*Inlet  
G 1/4" M*

Code	Description
CDR.0056	<b>Rotating brush with nylon bristle</b> , nozzle hole ø3 mm. 40 bar-580 psi, 30 l/min-8.00 USGpm, 60 °C-140 °F



gr. 920  
oz. 32.2

*Inlet  
G 1/4" M*

Code	Description
CDR.0478	<b>Rotating brush with horse hair bristle</b> , nozzle hole ø3,5 mm. 40 bar-580 psi, 30 l/min-8.00 USGpm, 60 °C-140 °F

## Nozzles

- L.p. nozzles

### Made of brass



gr. 20  
oz. 0.7

L.p. nozzles made of brass

Code	Inlet	Ang.	Nozzle
CDR.7290	1/4" NPT-M	65°	40
C.H1/8U-5020	1/8" NPT-M	50°	20
C.H1/8U-6550	1/8" NPT-M	65°	50
C.H1/4U-5020	1/4" NPT-M	50°	20
C.H1/4U-6550	1/4" NPT-M	65°	50



## Nozzles

- Adapter fitting kärcher

The spare parts branded "CdR" exclusively refer to products by Club dei Riparatori® by IDROBASE®

### Nozzles adapter



Code	Description	Weight
ZX.7019	<b>Brass adapter fitting Kärcher</b> , inlet M 18x1 F, outlet G 1/4" M. It is ideal to mount inlet G 1/4" F nozzles on lances fitting Kärcher with connection M 18x1 M.	gr. 50 oz. 1.8

## Nozzles

- Variable angle nozzle + Hi-Lo function

### 210 bar-3050 psi



Code	Nozzle	Description
CDR.0297	025	<b>Variable angle nozzles with Hi-Lo function</b> , inlet G 1/4" F, Max pressure 210 bar-3050 psi, Max temperature 150°C-300 °F.
CDR.0078	03	
CDR.0079	035	
CDR.0080	04	
CDR.0081	045	
CDR.0082	053	
CDR.0083	055	gr. 150 oz. 5.3

## Nozzles

- Sand blast

### Sand blast kit



Code	Nozzle	Description
P.25.0000.12	03	<b>Professional sand blast kit</b> . Complete with: brass head with WIDIA insert and painted steel probe. 250 bar-3600 psi, 40 l/min-10.50 USGpm.
P.25.0000.14	04	
P.25.0000.15	045	
P.25.0000.16	05	
P.25.0000.18	075	

### Sand blast set



Code	Nozzle	Description
ZX.0517	03	<b>Professional sand blast and painted steel probe set</b> . Complete with: brass head with WIDIA insert, 4 m-13.10' suction hose, no. 1 stainless steel hose clip. Furnished already assembled. 250 bar-3600 psi, 40 l/min-10.50 USGpm.
ZX.0518	04	
ZX.0519	045	
ZX.0520	05	
ZX.0521	075	

## Nozzles - Rotating

### 220 bar-3200 psi



Code	Nozzle	Description
G.003090151	035	<b>Professional rotating nozzles Kränzle Dirtkiller.</b> Inlet G 1/4" F, max pressure 220 bar-3200 psi, max temperature 70 °C-160 °F.
G.003090009	045	
G.003090131	055	
G.003090148	07	gr. 280 oz. 9.8

### 255 bar-3700 psi



Code	Nozzle	Description
CDR.0534	02	<b>Professional rotating nozzles.</b> Inlet G 1/4" F, max pressure 255 bar-3700 psi, max temperature 100 °C-210 °F.
CDR.0535	025	
CDR.0536	03	
CDR.0537	035	
CDR.0538	04	
CDR.0539	045	
CDR.0540	05	
CDR.0541	055	
CDR.0543	065	
CDR.0544	07	

### 255 bar-3700 psi



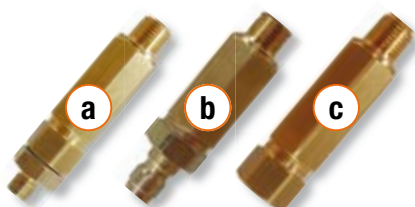
Code	Nozzle	Description
ZX.1060	02	<b>Professional rotating nozzles.</b> Ideal to be mounted on lances fitting Kärcher Inlet M 18x1 F, max pressure 255 bar-3700 psi, max temperature 100 °C-210 °F.
ZX.1061	025	
ZX.1062	03	
ZX.1063	035	
ZX.1064	04	
ZX.1065	045	
ZX.1066	05	
ZX.1067	055	
ZX.1069	065	
ZX.1070	07	

### 320 bar-4650 psi



Code	Nozzle	Description
G.003090049	045	<b>Professional rotating nozzles Kränzle Turbokiller.</b> Inlet G 1/4" F, max pressure 320 bar-4650 psi, max temperature 80 °C-175 °F.
G.003090006	055	
G.003090057	07	
G.003090084	08	
G.003090087	09	
G.003090119	10	

### High pressure filters



Code	Inlet	Outlet	Description
ZX.0785	G 1/4" M	G 1/4" M	<b>High pressure filters.</b> Made of brass, ideal to be mounted on the inlet of rotating nozzles. Max pressure 220 bar-3200 psi, max flow rate 30 l/min-8.00 USGpm.
ZX.0782	"Quick"	G 1/4" M	
CDR.0099	G 1/4" F	G 1/4" M	

## Nozzles - Sewer

### Sewer - G 1/8" F



Code	Nozzle	Description
CDR.S18-040-4	040	<b>Sewer nozzles,</b> inlet G 1/8" F, no. 3+1 holes, max pressure 350 bar-5000 psi
CDR.S18-045-4	045	
CDR.S18-055-4	055	
CDR.S18-065-4	065	

### Sewer - G 1/4" F



Code	Nozzle	Description
CDR.S14-040-4	040	<b>Sewer nozzles,</b> inlet G 1/4" F, no. 3+1 holes, max pressure 350 bar-5000 psi
CDR.S14-045-4	045	
CDR.S14-055-4	055	
CDR.S14-065-4	065	

### Professional sewer



Code	Nozzle	Description
CDR.0365	04	<b>Professional sewer nozzle,</b> made of stainless steel, inlet G 1/4" M. no. 4 holes, 250 bar-3600 psi.
		gr. 25      oz. 0.9
CDR.0366	06	<b>Professional sewer nozzle,</b> made of stainless steel, inlet G 3/8" M, no. 9 holes, 250 bar-3600 psi
		gr. 36      oz. 1.3

### Rotating sewer - G 1/8" F



Code	Nozzle	Description
CDR.0508	040	<b>Rotating sewer nozzles,</b> inlet G 1/8" F, max pressure 250 bar-3600 psi
CDR.0509	045	
CDR.0510	050	
CDR.0511	060	

### Rotating sewer - G 1/8" F



Code	Nozzle	Description
CDR.0512	040	<b>Rotating sewer nozzles,</b> inlet G 1/8" F, max pressure 250 bar-3600 psi
CDR.0513	045	
CDR.0514	050	
CDR.0515	060	